

TOURIST ACCOMMODATION, AUSTRALIA, SEPTEMBER QUARTER 1994

MAIN FEATURES

SEPTEMBER QUARTER 1994
COMPARED WITH
SEPTEMBER QUARTER 1993

HOTELS, MOTELS AND GUEST HOUSES

- Rooms available decreased slightly overall to 166,407 although Queensland, Western Australia, Tasmania and Northern Territory recorded small increases.
- Room nights occupied increased by 6.7 per cent to 8.9 million overall with increases in all States/Territories, including 14.1 per cent in Tasmania, 9.3 per cent in Victoria and 7.4 per cent in New South Wales.
- The room occupancy rate overall rose from 54.5 per cent to 58.4 per cent, with five star and four star rated establishments recording increases of 8.8 percentage points and 7.4 percentage points respectively.
- Guest nights increased by 7.3 per cent to 15.8 million and the bed occupancy rate increased from 33.5 per cent to 35.9 per cent.
- Guest arrivals increased by 7.4 per cent to 7.8 million while average length of stay remained at 2.0 days overall, ranging from 2.4 days for Queensland to 1.8 days for New South Wales and South Australia. By star rating, average length of stay ranged from 2.5 days for five star to 1.8 days for two star establishments.
- Takings from accommodation increased by 13.1 per cent from \$672.2m to \$759.9m while average takings per room night occupied increased overall from \$80 to \$85, ranging from \$88 for Australian Capital Territory to \$72 for Tasmania.
- Employment (full-time and part-time) increased by 2.5 per cent from 101,444 persons to 104,020 persons.

HOLIDAY FLATS, UNITS AND HOUSES

- The number of units, etc. available for short-term letting increased by 5.2 per cent to 36,256 while unit nights occupied increased by 8.5 per cent to 1.9 million.
- The unit occupancy rate consequently increased from 55.3 per cent to 57.1 per cent.
- Unit lettings increased by 10.8 per cent to 0.32 million but average length of stay fell slightly from 6.0 days to 5.8 days.
- Accommodation takings increased by 16.5 per cent from \$99.6m to \$116.0m while average takings per unit night occupied increased from \$57 to \$61.

CARAVAN PARKS

- Capacity available increased slightly from 287,866 to 288,143 powered and unpowered sites and cabins, etc. of which 47,858 sites, etc. (16.6 per cent) were occupied by long-term residents, 44,063 sites (15.3 per cent) were permanently reserved but only casually occupied by their tenants and an average of 34,736 sites (12.1 per cent) were occupied by other short-term guests.
- Site nights occupied increased by 1.8 per cent to 11.7 million and the site occupancy rate rose from 43.2 per cent to 44.0 per cent.
- Takings from accommodation increased by 5.2 per cent from \$104.4m to \$109.8m at an average of \$9 per site night occupied.

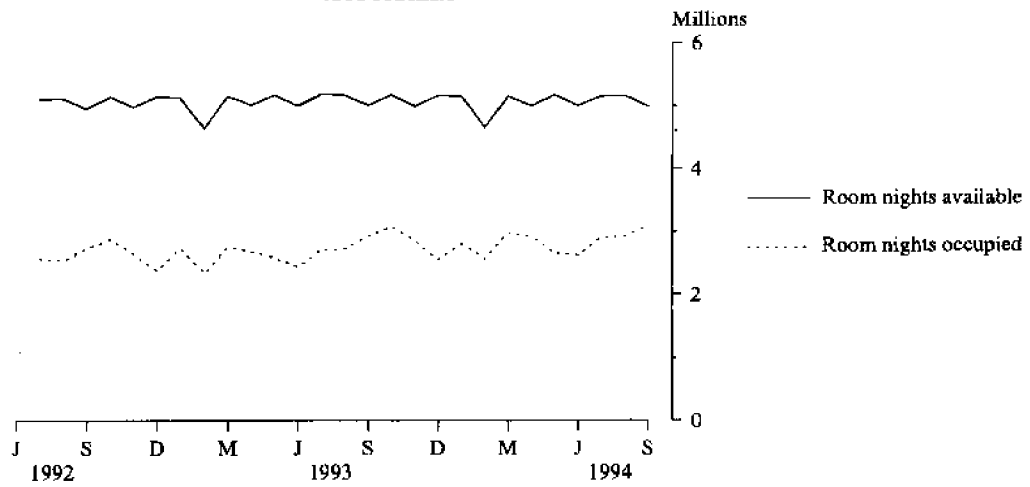
VISITOR HOSTELS

- Bed spaces available increased by 3.9 per cent from 24,681 to 25,634 and guest nights increased by 3.1 per cent to 1.03 million.
- The bed occupancy rate decreased from 43.9 per cent to 43.6 per cent.
- Accommodation takings increased by 7.9 per cent from \$11.5m to \$12.4m at an average of \$12 per guest night.

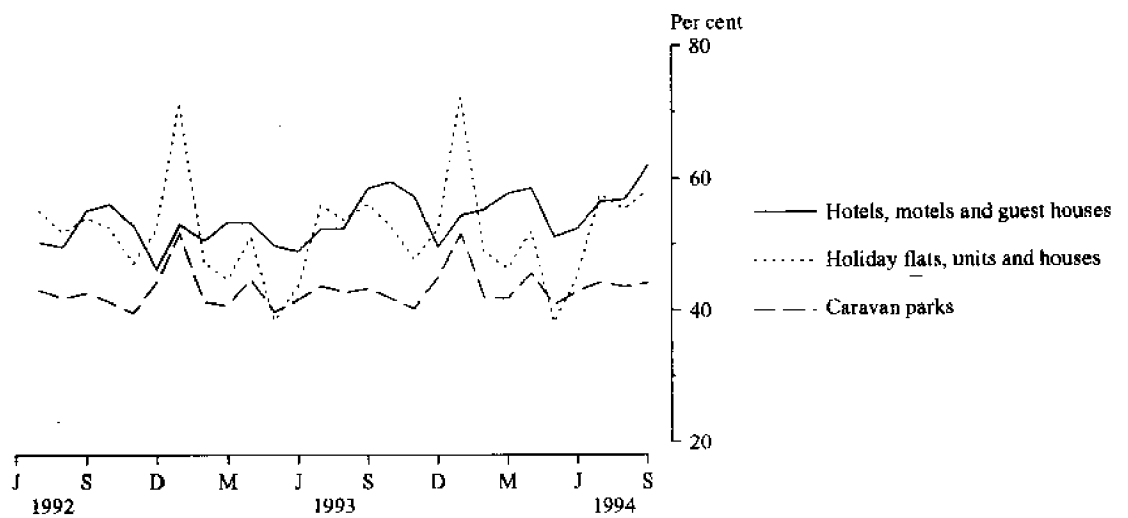
INQUIRIES

- *for further information about statistics in this publication and the availability of related unpublished statistics, contact John Alexander on Brisbane (07) 222 6215 or any ABS office.*
- *for information about other ABS statistics and services, refer to the back page of this publication.*

**MONTHLY ROOM NIGHTS AVAILABLE AND OCCUPIED:
HOTELS, MOTELS AND GUEST HOUSES,
AUSTRALIA**



**MONTHLY OCCUPANCY RATES,
AUSTRALIA**



**MONTHLY TAKINGS FROM ACCOMMODATION,
AUSTRALIA**

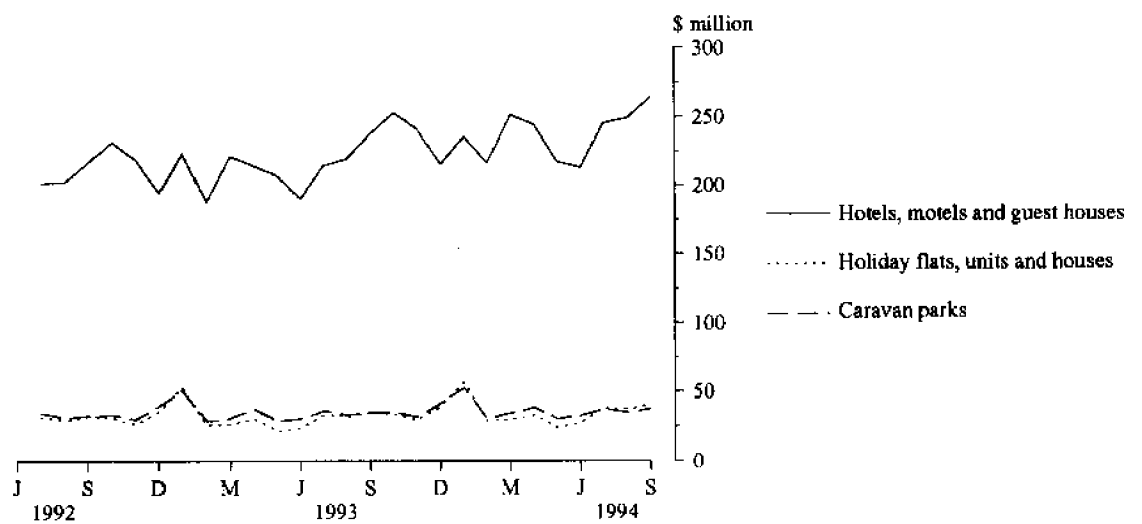


TABLE 1 — SUMMARY OF HOTELS, MOTELS AND GUEST HOUSES WITH FACILITIES, AUSTRALIA (a)

Particulars	Unit	Quarter ended				Year ended			
		June 1993	September 1993	December 1993	March 1994	June 1994	September 1994	September 1993	September 1994
LICENSED HOTELS WITH FACILITIES									
Establishments	No.	1,196	1,185	1,138	1,131	1,139	1,132
Guest rooms	No.	66,305	66,348	66,517	66,386	66,443	66,524
Bed spaces	No.	174,671	174,935	175,476	175,508	176,344	177,606
Employment (persons)	No.	62,104	64,208	65,735	65,257	64,744	66,323
Room nights occupied	'000	3,151.0	3,422.0	3,725.3	3,647.9	3,491.7	3,849.5	13,062.6	14,714.4
Room occupancy rate	per cent	52.3	56.1	61.0	61.1	57.7	63.0	54.7	60.7
Guest nights	'000	5,171.1	5,695.1	6,261.5	6,145.9	5,724.2	6,505.2	21,734.1	24,636.8
Bed occupancy rate	per cent	32.6	35.4	39.0	38.9	35.7	39.9	34.6	38.4
Guest arrivals	'000	2,197.1	2,447.5	2,715.2	2,673.6	2,454.6	2,802.3	9,240.1	10,645.8
Average length of stay	days	2.4	2.3	2.3	2.3	2.3	2.3	2.4	2.3
Takings from accommodation	\$'000	315,612	344,815	391,787	385,605	362,964	409,128	1,326,739	1,549,484
MOTELS AND GUEST HOUSES WITH FACILITIES									
Establishments	No.	3,750	3,739	3,694	3,684	3,700	3,674
Guest rooms	No.	100,701	100,670	100,226	99,876	100,227	99,883
Bed spaces	No.	304,225	304,200	302,890	302,063	303,246	301,775
Employment (persons)	No.	36,387	37,236	36,843	36,616	36,911	37,697
Room nights occupied	'000	4,555.6	4,938.5	4,777.8	4,707.0	4,705.3	5,075.3	18,731.3	19,265.4
Room occupancy rate	per cent	49.8	53.4	51.9	52.4	51.6	55.3	50.9	52.8
Guest nights	'000	8,206.1	9,036.9	8,755.5	8,815.4	8,485.2	9,305.9	34,353.9	35,361.9
Bed occupancy rate	per cent	29.7	32.3	31.5	32.5	30.8	33.5	30.9	32.1
Guest arrivals	'000	4,439.2	4,858.1	4,712.8	4,641.1	4,588.1	5,042.6	18,323.6	18,984.6
Average length of stay	days	1.8	1.9	1.9	1.9	1.8	1.8	1.9	1.9
Takings from accommodation	\$'000	296,315	327,348	317,754	318,309	311,549	350,767	1,234,818	1,298,379
TOTAL HOTELS, MOTELS AND GUEST HOUSES WITH FACILITIES									
Establishments	No.	4,946	4,924	4,832	4,815	4,839	4,806
Guest rooms	No.	167,006	167,018	166,743	166,262	166,670	166,407
Bed spaces	No.	478,896	479,135	478,366	477,571	479,590	479,381
Employment (persons)	No.	98,491	101,444	102,578	101,873	101,655	104,020
Room nights occupied	'000	7,706.6	8,360.5	8,503.1	8,355.0	8,196.9	8,924.8	31,793.9	33,979.8
Room occupancy rate	per cent	50.8	54.5	55.5	55.9	54.1	58.4	52.4	56.0
Guest nights	'000	13,377.2	14,732.0	15,017.0	14,961.3	14,209.4	15,811.0	56,088.0	59,998.7
Bed occupancy rate	per cent	30.7	33.5	34.2	34.8	32.6	35.9	32.3	34.4
Guest arrivals	'000	6,636.3	7,305.6	7,428.1	7,314.7	7,042.7	7,844.9	27,563.7	29,630.4
Average length of stay	days	2.0	2.0	2.0	2.0	2.0	2.0	2.0	2.0
Takings from accommodation	\$'000	611,927	672,163	709,542	703,914	674,513	759,895	2,561,556	2,847,863

(a) From December quarter 1993, establishments with fewer than 5 rooms have been excluded from the scope of this collection. See Explanatory Note 2 (page 20).

TABLE 2 — SUMMARY OF CARAVAN PARKS, AUSTRALIA

Particulars	Unit	Quarter ended				Year ended			
		June 1993	September 1993	December 1993	March 1994	June 1994	September 1994	September 1993	September 1994
SHORT-TERM CARAVAN PARKS									
Establishments	No.	1,552	1,609	1,621	1,621	1,627	1,665
Capacity									
On-site vans	No.	8,615	8,828	8,856	8,846	8,778	8,862
Other powered sites	No.	112,098	118,312	118,829	119,046	119,565	120,654
Unpowered sites	No.	51,814	52,310	52,415	51,861	51,258	52,132
Cabins, etc.	No.	8,549	8,669	8,834	8,966	9,080	9,401
Total capacity	No.	181,076	188,119	188,934	188,719	188,681	191,049
Sites occupied by long-term guests	No.	8,265	9,365	9,262	9,386	9,550	9,684
Other sites permanently reserved	No.	36,952	40,539	41,330	41,954	41,594	41,829
Employment (persons)	No.	5,427	5,563	5,867	5,813	5,704	5,890
Site nights occupied	'000	6,043.6	6,741.8	6,709.4	7,251.0	6,725.7	7,030.6	25,424.4	27,716.7
Site occupancy rate	per cent	36.7	39.0	38.8	42.7	39.3	40.1	38.2	40.2
Takings from accommodation	\$'000	49,384	55,807	61,678	69,484	53,625	60,551	223,191	245,337
LONG-TERM CARAVAN PARKS									
Establishments	No.	1,129	1,086	1,083	1,080	1,075	1,056
Capacity									
On-site vans	No.	12,202	12,070	12,103	12,221	12,096	11,951
Other powered sites	No.	69,838	64,695	64,271	63,932	63,685	62,543
Unpowered sites	No.	17,561	16,888	16,855	16,428	16,529	16,080
Cabins, etc.	No.	5,996	6,094	6,137	6,278	6,528	6,520
Total capacity	No.	105,597	99,747	99,366	98,859	98,838	97,094
Sites occupied by long-term guests	No.	39,660	38,687	38,065	38,205	38,485	38,174
Other sites permanently reserved	No.	5,575	2,255	2,474	2,511	2,491	2,234
Employment (persons)	No.	3,906	3,777	3,827	3,845	3,769	3,735
Site nights occupied	'000	4,925.7	4,700.6	4,486.9	4,449.1	4,530.3	4,621.8	19,496.1	18,088.1
Site occupancy rate	per cent	51.3	51.2	49.1	50.0	50.4	51.7	51.3	50.3
Takings from accommodation	\$'000	47,587	48,567	46,827	47,613	47,240	49,286	191,456	190,966
TOTAL CARAVAN PARKS									
Establishments	No.	2,681	2,695	2,704	2,701	2,702	2,721
Capacity									
On-site vans	No.	20,817	20,898	20,959	21,067	20,874	20,813
Other powered sites	No.	181,936	183,007	183,100	182,978	183,250	183,197
Unpowered sites	No.	69,375	69,198	69,270	68,289	67,787	68,212
Cabins, etc.	No.	14,545	14,763	14,971	15,244	15,608	15,921
Total capacity	No.	286,673	287,866	288,300	287,578	287,519	288,143
Sites occupied by long-term guests	No.	47,925	48,052	47,327	47,591	48,035	47,858
Other sites permanently reserved	No.	42,527	42,794	43,804	44,465	44,085	44,063
Employment (persons)	No.	9,333	9,340	9,694	9,658	9,473	9,625
Site nights occupied	'000	10,969.3	11,442.4	11,196.3	11,700.1	11,256.0	11,652.4	44,920.5	45,804.8
Site occupancy rate	per cent	42.1	43.2	42.4	45.2	43.1	44.0	43.0	43.7
Takings from accommodation	\$'000	96,971	104,374	108,504	117,097	100,865	109,837	414,647	436,303

TABLE 3 — SUMMARY OF HOLIDAY FLATS, UNITS AND HOUSES, AUSTRALIA

Particulars	Unit	Quarter ended				Year ended			
		June 1993	September 1993	December 1993	March 1994	June 1994	September 1994	September 1993	September 1994
Letting entities	No.	1,440	1,453	1,493	1,491	1,495	1,510
Flats, units and houses									
Single bedroom	No.	7,665	7,733	7,986	7,848	7,758	7,972
Multiple bedroom	No.	26,110	26,726	27,500	27,562	27,554	28,284
Total flats, units and houses	No.	33,775	34,459	35,486	35,410	35,312	36,256
Bed spaces	No.	146,251	148,721	154,103	154,325	153,381	156,912
Employment (persons) (a)	No.	4,788	4,868	5,155	5,221	5,206	5,363
Unit nights occupied	'000	1,362.1	1,750.8	1,663.6	1,781.8	1,447.6	1,899.5	6,389.2	6,792.4
Unit occupancy rate	per cent	44.3	55.3	51.1	56.1	45.1	57.1	51.3	52.4
Unit lettings	'000	256.4	293.2	312.9	314.6	277.1	324.8	1,128.2	1,229.4
Average length of stay	days	5.3	6.0	5.3	5.7	5.2	5.8	5.7	5.5
Takings from accommodation	\$'000	75,462	99,577	102,697	116,167	84,752	116,042	373,138	419,658

(a) Employment numbers exclude real estate agents and their employees.

TABLE 4 — SUMMARY OF VISITOR HOSTELS, AUSTRALIA

Particulars	Unit	Quarter ended				Year ended			
		June 1993	September 1993	December 1993	March 1994	June 1994	September 1994	September 1993	September 1994
Establishments	No.	397	410	414	426	417	422
Bed spaces	No.	24,680	24,681	24,960	25,748	25,061	25,634
Employment (persons)	No.	1,462	1,487	1,508	1,535	1,512	1,538
Guest nights	'000	881.8	994.9	989.3	1,042.9	924.4	1,026.0	3,873.5	3,982.6
Bed occupancy rate	per cent	39.3	43.9	43.2	45.3	40.6	43.6	42.8	43.2
Guest arrivals	'000	335.1	376.5	364.3	408.6	354.2	379.8	1,433.9	1,506.8
Average length of stay	days	2.6	2.6	2.7	2.6	2.6	2.7	2.7	2.6
Takings from accommodation	\$'000	10,479	11,511	11,694	12,560	11,031	12,425	45,065	47,711

TABLE 5 — HOTELS, MOTELS AND GUEST HOUSES WITH FACILITIES BY STAR GRADING (a)
NEW SOUTH WALES

Particulars	Licensed hotels with facilities	Motels and guest houses	Star grading					Ungraded	Total
			1	2	3	4	5		
ESTABLISHMENTS, CAPACITY AND EMPLOYMENT									
<i>September quarter 1993</i>									
Establishments	281	1,475	38	572	736	120	20	270	1,756
Guest rooms	18,727	38,630	611	12,070	21,350	11,084	6,308	5,934	57,357
Bed spaces	47,271	118,298	1,603	37,216	64,196	32,063	13,872	16,619	165,569
Employment (persons)	15,951	14,590	283	4,543	8,323	7,685	6,089	3,618	30,541
<i>September quarter 1994—</i>									
Establishments	268	1,454	38	568	774	129	17	196	1,722
Guest rooms	18,509	38,382	525	11,726	22,572	12,318	5,293	4,457	56,891
Bed spaces	47,341	117,850	1,318	36,221	68,413	34,548	12,389	12,302	165,191
Employment (persons)	16,522	14,828	333	4,645	9,048	9,017	5,353	2,954	31,350
ROOM NIGHTS OCCUPIED ('000)									
<i>September quarter 1993</i>									
	929.4	1,855.3	25.6	522.4	1,042.1	629.4	321.0	244.3	2,784.7
<i>1994—</i>									
July	348.8	624.3	5.6	167.2	375.1	266.9	95.5	62.9	973.1
August	365.6	605.6	5.9	162.8	359.6	267.9	106.1	69.1	971.3
September	372.0	674.3	5.7	184.0	404.2	275.0	111.2	66.2	1,046.3
<i>September quarter 1994</i>									
	1,086.4	1,904.3	17.2	514.0	1,138.9	809.7	312.7	198.1	2,990.7
ROOM OCCUPANCY RATES (per cent)									
<i>September quarter 1993</i>									
	53.9	52.2	45.5	47.1	53.1	61.7	55.3	44.9	52.8
<i>1994—</i>									
July	60.8	52.5	34.4	46.1	53.6	69.9	58.2	45.5	55.2
August	63.7	50.9	36.4	44.8	51.4	70.2	64.6	50.0	55.1
September	67.0	58.6	36.2	52.4	59.7	74.4	70.0	49.5	61.3
<i>September quarter 1994</i>									
	63.8	54.0	35.7	47.7	54.9	71.5	64.2	48.3	57.2
GUEST NIGHTS ('000)									
<i>September quarter 1993</i>									
	1,510.0	3,427.6	44.7	1,008.9	1,895.1	1,036.5	521.2	431.2	4,937.6
<i>1994—</i>									
July	593.8	1,191.1	9.2	339.8	708.7	454.4	153.1	119.7	1,784.9
August	603.1	1,085.6	9.0	317.7	630.2	433.2	170.1	128.5	1,688.7
September	621.3	1,284.1	9.0	371.9	760.0	464.8	177.5	122.2	1,905.5
<i>September quarter 1994</i>									
	1,818.3	3,560.8	27.2	1,029.4	2,098.8	1,352.5	500.8	370.4	5,379.1
BED OCCUPANCY RATES (per cent)									
<i>September quarter 1993</i>									
	34.7	31.5	30.3	29.5	32.1	35.1	40.8	28.3	32.4
<i>1994—</i>									
July	40.5	32.6	22.4	30.3	33.4	42.4	39.9	31.4	34.9
August	41.1	29.7	22.1	28.3	29.7	40.4	44.3	33.7	33.0
September	43.7	36.3	22.8	34.3	37.0	44.8	47.8	33.1	38.5
<i>September quarter 1994</i>									
	41.7	32.9	22.5	30.9	33.4	42.6	43.9	32.7	35.4
GUEST ARRIVALS ('000)									
<i>September quarter 1993</i>									
	722.0	2,006.4	23.3	612.3	1,137.8	502.0	237.7	215.4	2,728.4
<i>1994—</i>									
July	272.7	706.1	4.9	207.9	427.9	219.5	65.6	53.0	978.8
August	277.1	637.2	4.8	189.8	380.5	208.8	75.2	55.0	914.3
September	287.6	756.3	5.2	224.3	457.3	228.7	73.9	54.6	1,043.9
<i>September quarter 1994</i>									
	837.4	2,099.7	14.9	622.0	1,265.7	657.0	214.8	162.6	2,937.1
AVERAGE LENGTH OF STAY (days)									
<i>September quarter 1993</i>									
	2.1	1.7	1.9	1.6	1.7	2.1	2.2	2.0	1.8
<i>September quarter 1994</i>									
	2.2	1.7	1.8	1.7	1.7	2.1	2.3	2.3	1.8
TAKINGS FROM ACCOMMODATION (\$'000)									
<i>September quarter 1993</i>									
	99,782	129,672	985	28,581	70,638	61,532	45,557	22,161	229,454
<i>1994—</i>									
July	38,307	46,161	248	9,886	26,470	27,599	14,321	5,946	84,469
August	40,086	44,467	247	9,881	25,054	26,658	15,925	6,788	84,554
September	42,521	49,476	256	10,818	28,576	28,824	17,244	6,279	91,997
<i>September quarter 1994</i>									
	120,915	140,105	751	30,585	80,099	83,082	47,491	19,013	261,020

(a) For footnote see end of table.

TABLE 5 — HOTELS, MOTELS AND GUEST HOUSES WITH FACILITIES BY STAR GRADING (a)—continued
VICTORIA

Particulars	Licensed hotels with facilities	Motels and guest houses	Star grading					Ungraded	Total
			1	2	3	4	5		
ESTABLISHMENTS, CAPACITY AND EMPLOYMENT									
<i>September quarter 1993—</i>									
Establishments	212	831	26	379	447	64	7	120	1,043
Guest rooms	9,934	20,382	271	7,009	12,170	6,054	2,412	2,400	30,316
Bed spaces	23,764	59,806	691	19,943	36,234	14,843	5,044	6,815	83,570
Employment (persons)	9,138	6,825	283	3,270	4,371	3,887	2,955	1,197	15,963
<i>September quarter 1994—</i>									
Establishments	189	814	19	386	455	72	8	63	1,003
Guest rooms	10,010	19,670	243	7,404	12,002	6,056	2,650	1,325	29,680
Bed spaces	24,462	57,526	642	21,057	35,690	15,198	5,510	3,891	81,988
Employment (persons)	9,431	6,412	201	3,449	4,324	3,929	3,170	770	15,843
ROOM NIGHTS OCCUPIED ('000)									
<i>September quarter 1993</i>	428.5	774.9	5.1	211.5	488.2	308.0	117.0	73.5	1,203.4
<i>1994—</i>									
July	169.4	258.5	1.1	75.7	169.1	119.2	47.3	15.5	428.0
August	173.4	248.4	1.2	72.0	162.6	119.8	50.4	15.9	421.9
September	184.7	280.9	1.2	84.9	183.8	125.0	53.9	16.8	465.6
<i>September quarter 1994</i>	527.6	787.9	3.5	232.7	515.5	364.0	151.6	48.2	1,315.4
ROOM OCCUPANCY RATES (per cent)									
<i>September quarter 1993</i>	47.0	41.4	20.4	32.9	43.8	55.3	52.7	33.3	43.2
<i>1994—</i>									
July	54.6	42.4	14.5	33.0	45.5	63.5	57.5	37.7	46.5
August	56.0	40.8	15.9	31.5	43.7	63.8	61.3	38.8	45.9
September	61.5	47.6	17.1	38.2	51.0	68.8	67.8	42.4	52.3
<i>September quarter 1994</i>	57.3	43.6	15.8	34.2	46.7	65.3	62.2	39.6	48.2
GUEST NIGHTS ('000)									
<i>September quarter 1993</i>	654.6	1,352.3	7.2	376.0	842.9	459.9	167.0	153.8	2,006.8
<i>1994—</i>									
July	265.7	460.3	1.5	138.4	301.8	181.8	68.5	34.0	726.0
August	262.5	415.0	1.6	126.9	269.0	174.4	71.0	34.6	677.5
September	284.9	495.2	1.8	152.9	323.5	187.9	78.4	35.5	780.1
<i>September quarter 1994</i>	813.1	1,370.5	4.9	418.2	894.3	544.2	217.8	104.1	2,183.6
BED OCCUPANCY RATES (per cent)									
<i>September quarter 1993</i>	30.0	24.6	11.4	20.5	25.4	33.7	36.0	24.6	26.2
<i>1994—</i>									
July	35.0	25.8	7.6	21.2	27.3	38.6	40.1	28.2	28.6
August	34.7	23.3	8.0	19.5	24.3	37.0	41.6	28.7	26.7
September	38.8	28.7	9.4	24.2	30.2	41.2	47.4	30.5	31.7
<i>September quarter 1994</i>	36.2	25.9	8.3	21.6	27.2	38.9	43.0	29.1	29.0
GUEST ARRIVALS ('000)									
<i>September quarter 1993</i>	314.2	791.9	4.6	228.5	512.0	217.0	83.5	60.4	1,106.0
<i>1994—</i>									
July	122.9	266.6	1.1	80.6	178.5	84.7	31.1	13.5	389.5
August	123.0	237.8	1.1	72.4	159.4	82.2	31.8	14.0	360.8
September	137.4	287.0	1.2	85.6	194.8	92.6	34.9	15.4	424.4
<i>September quarter 1994</i>	383.3	791.4	3.3	238.6	532.7	259.5	97.8	42.9	1,174.7
AVERAGE LENGTH OF STAY (days)									
<i>September quarter 1993</i>	2.1	1.7	1.6	1.6	1.6	2.1	2.0	2.5	1.8
<i>September quarter 1994</i>	2.1	1.7	1.5	1.8	1.7	2.1	2.2	2.4	1.9
TAKINGS FROM ACCOMMODATION (\$'000)									
<i>September quarter 1993</i>	46,741	53,895	174	10,957	32,723	32,611	16,739	7,431	100,636
<i>1994—</i>									
July	18,359	17,964	37	4,131	11,669	12,476	6,521	1,489	36,323
August	18,992	17,838	33	4,021	11,069	13,013	6,939	1,756	36,831
September	20,808	19,707	50	4,611	12,593	13,968	7,699	1,592	40,515
<i>September quarter 1994</i>	58,159	55,510	120	12,763	35,331	39,457	21,159	4,838	113,668

(a) For footnote see end of table.

TABLE 5 — HOTELS, MOTELS AND GUEST HOUSES WITH FACILITIES BY STAR GRADING (a) — continued
QUEENSLAND

Particulars	Licensed hotels with facilities	Motels and guest houses	Star grading					Ungraded	Total
			1	2	3	4	5		
ESTABLISHMENTS, CAPACITY AND EMPLOYMENT									
<i>September quarter 1993</i>									
Establishments	276	840	22	455	396	53	18	172	1,116
Guest rooms	17,968	22,056	321	8,409	15,027	7,759	5,533	2,975	40,024
Bed spaces	53,271	68,210	955	25,171	46,103	24,499	16,048	8,705	121,481
Employment (persons)	20,346	8,373	157	3,818	7,842	5,905	8,703	2,294	28,719
<i>September quarter 1994—</i>									
Establishments	264	831	18	449	406	52	17	153	1,095
Guest rooms	18,194	22,188	300	8,513	15,905	7,571	5,286	2,807	40,382
Bed spaces	54,602	68,284	872	25,617	48,461	24,676	15,260	8,000	122,886
Employment (persons)	21,133	8,749	144	3,826	8,749	6,212	8,732	2,219	29,882
ROOM NIGHTS OCCUPIED ('000)									
<i>September quarter 1993</i>	1,066.3	1,353.1	11.9	458.5	958.8	506.4	335.8	148.0	2,419.4
<i>1994—</i>									
July	379.4	465.9	3.9	161.0	342.8	174.3	118.3	45.0	845.3
August	397.3	466.7	3.7	160.3	345.7	178.5	126.7	49.0	863.9
September	389.0	457.3	3.9	160.3	339.6	171.8	123.6	47.0	846.3
<i>September quarter 1994</i>	1,165.7	1,389.8	11.5	481.6	1,028.1	524.6	368.7	140.9	2,555.4
ROOM OCCUPANCY RATES (per cent)									
<i>September quarter 1993</i>	64.5	66.8	40.2	59.4	69.4	71.0	66.0	54.1	65.7
<i>1994—</i>									
July	68.1	67.7	41.8	61.0	69.6	74.2	72.2	55.8	67.9
August	70.5	67.9	39.4	60.8	70.1	76.1	77.3	56.6	69.0
September	71.3	68.7	43.7	62.8	71.2	75.6	78.0	55.8	69.9
<i>September quarter 1994</i>	69.9	68.1	41.6	61.5	70.3	75.3	75.8	56.1	68.9
GUEST NIGHTS ('000)									
<i>September quarter 1993</i>	1,967.6	2,557.8	20.4	843.4	1,801.5	974.9	608.4	276.8	4,525.4
<i>1994—</i>									
July	718.8	878.0	7.4	297.8	649.0	344.4	214.5	83.8	1,596.9
August	738.1	853.9	6.5	287.6	638.2	347.9	222.6	89.3	1,592.0
September	747.7	883.8	7.5	307.1	656.7	342.9	227.4	89.9	1,631.5
<i>September quarter 1994</i>	2,204.7	2,615.7	21.4	892.5	1,943.9	1,035.1	664.4	263.0	4,820.4
BED OCCUPANCY RATES (per cent)									
<i>September quarter 1993</i>	40.1	40.8	23.3	36.5	42.5	43.3	41.2	34.6	40.5
<i>1994—</i>									
July	42.9	41.5	27.4	37.5	43.2	45.0	45.3	35.9	42.1
August	43.6	40.3	23.9	36.2	42.5	45.5	47.0	36.2	41.8
September	45.7	43.1	28.8	40.0	45.2	46.3	49.7	37.5	44.3
<i>September quarter 1994</i>	44.0	41.6	26.7	37.9	43.6	45.6	47.3	36.5	42.7
GUEST ARRIVALS ('000)									
<i>September quarter 1993</i>	649.7	1,238.7	12.1	471.9	804.8	316.8	180.9	101.9	1,888.4
<i>1994—</i>									
July	256.0	433.6	4.3	168.5	289.9	121.2	75.7	30.0	689.5
August	260.4	409.5	3.9	156.7	278.9	123.2	76.1	31.1	669.9
September	253.8	427.4	4.1	166.4	286.5	116.3	77.8	30.0	681.2
<i>September quarter 1994</i>	770.1	1,270.5	12.3	491.6	855.3	360.7	229.7	91.1	2,040.6
AVERAGE LENGTH OF STAY (days)									
<i>September quarter 1993</i>	3.0	2.1	1.7	1.8	2.2	3.1	3.4	2.7	2.4
<i>September quarter 1994</i>	2.9	2.1	1.7	1.8	2.3	2.9	2.9	2.9	2.4
TAKINGS FROM ACCOMMODATION (\$'000)									
<i>September quarter 1993</i>	113,608	81,890	576	19,983	66,397	50,244	48,684	9,614	195,498
<i>1994—</i>									
July	43,304	29,154	234	7,667	24,973	18,603	18,168	2,812	72,458
August	45,563	29,508	212	7,562	25,557	19,123	19,474	3,144	75,072
September	45,776	29,252	260	7,711	25,685	18,808	19,453	3,110	75,029
<i>September quarter 1994</i>	134,644	87,914	706	22,941	76,216	56,534	57,095	9,067	222,559

(a) For footnote see end of table.

TABLE 5 — HOTELS, MOTELS AND GUEST HOUSES WITH FACILITIES BY STAR GRADING (a)—continued
SOUTH AUSTRALIA

Particulars	Licensed hotels with facilities	Motels and guest houses	Star grading					Ungraded	Total
			1	2	3	4	5		
ESTABLISHMENTS, CAPACITY AND EMPLOYMENT									
<i>September quarter 1993—</i>									
Establishments	121	236	17	148	135	17	3	37	357
Guest rooms	4,520	6,084	219	3,147	4,667	1,124	1,083	364	10,604
Bed spaces	11,044	18,653	470	8,850	13,798	3,465	2,166	948	29,697
Employment (persons)	5,196	2,428	233	2,072	2,549	1,133	1,001	636	7,624
<i>September quarter 1994—</i>									
Establishments	116	226	11	144	141	18	3	25	342
Guest rooms	4,426	6,134	136	3,072	4,792	1,187	1,081	297	10,560
Bed spaces	10,954	18,792	297	8,699	14,131	3,696	2,178	745	29,746
Employment (persons)	5,087	2,454	186	2,138	2,697	957	944	619	7,541
ROOM NIGHTS OCCUPIED ('000)									
<i>September quarter 1993</i>	199.7	256.7	3.9	105.1	208.9	67.1	62.1	9.3	456.4
<i>1994—</i>									
July	66.0	79.4	1.0	32.6	67.2	22.0	19.7	3.0	145.4
August	67.9	82.1	1.1	34.1	69.0	21.9	20.9	3.0	150.0
September	75.1	101.0	1.2	40.6	82.2	25.9	22.7	3.4	176.1
<i>September quarter 1994</i>	209.0	262.5	3.3	107.4	218.4	69.8	63.3	9.4	471.5
ROOM OCCUPANCY RATES (per cent)									
<i>September quarter 1993</i>	48.0	45.9	19.3	36.3	48.7	64.9	62.3	27.8	46.8
<i>1994—</i>									
July	48.1	42.0	23.0	34.6	45.3	59.8	58.6	33.1	44.6
August	49.5	43.5	25.9	36.4	46.4	59.6	62.2	33.1	46.0
September	56.6	55.3	29.4	44.8	57.2	72.8	70.1	38.4	55.8
<i>September quarter 1994</i>	51.3	46.8	26.0	38.5	49.5	64.0	63.6	34.9	48.7
GUEST NIGHTS ('000)									
<i>September quarter 1993</i>	303.5	440.4	5.5	182.0	346.6	108.6	86.5	14.7	743.9
<i>1994—</i>									
July	104.3	139.8	1.4	58.2	116.1	35.2	28.7	4.5	244.1
August	99.1	131.6	1.5	56.9	108.3	31.7	28.0	4.3	230.7
September	112.2	173.1	1.6	70.9	135.3	41.0	31.6	4.9	285.3
<i>September quarter 1994</i>	315.5	444.6	4.5	186.0	359.7	108.0	88.3	13.7	760.1
BED OCCUPANCY RATES (per cent)									
<i>September quarter 1993</i>	29.9	25.7	12.6	22.4	27.3	34.1	43.4	16.9	27.2
<i>1994—</i>									
July	30.7	24.1	14.8	21.8	26.5	30.7	42.5	19.3	26.6
August	29.2	22.8	16.4	21.4	24.7	27.7	41.5	18.6	25.1
September	34.1	30.9	17.9	27.6	31.9	37.0	48.4	22.1	32.1
<i>September quarter 1994</i>	31.3	25.9	16.4	23.6	27.7	31.7	44.1	20.0	27.9
GUEST ARRIVALS ('000)									
<i>September quarter 1993</i>	152.2	253.8	2.9	113.3	199.5	46.3	36.4	7.6	406.0
<i>1994—</i>									
July	54.7	83.3	0.7	36.6	68.9	16.3	13.0	2.5	138.0
August	51.7	77.3	0.7	34.5	63.4	15.0	13.1	2.3	128.9
September	57.3	102.0	0.8	44.3	79.2	18.4	14.0	2.6	159.3
<i>September quarter 1994</i>	163.7	262.6	2.1	115.4	211.5	49.7	40.1	7.4	426.2
AVERAGE LENGTH OF STAY (days)									
<i>September quarter 1993</i>	2.0	1.7	1.9	1.6	1.7	2.3	2.4	1.9	1.8
<i>September quarter 1994</i>	1.9	1.7	2.1	1.6	1.7	2.2	2.2	1.8	1.8
TAKINGS FROM ACCOMMODATION (\$'000)									
<i>September quarter 1993</i>	16,861	16,272	114	4,813	13,645	6,617	7,456	488	33,133
<i>1994</i>									
July	5,551	5,181	27	1,506	4,506	2,196	2,395	103	10,732
August	5,699	5,242	27	1,546	4,522	2,135	2,612	100	10,941
September	6,501	6,560	36	1,906	5,532	2,555	2,915	118	13,061
<i>September quarter 1994</i>	17,752	16,982	90	4,957	14,559	6,885	7,921	321	34,734

(a) For footnote see end of table.

TABLE 5 — HOTELS, MOTELS AND GUEST HOUSES WITH FACILITIES BY STAR GRADING (a)—continued
WESTERN AUSTRALIA

Particulars	Licensed hotels with facilities	Motels and guest houses	Star grading					Ungraded	Total
			1	2	3	4	5		
ESTABLISHMENTS, CAPACITY AND EMPLOYMENT									
<i>September quarter 1993—</i>									
Establishments	160	166	10	125	108	9	8	66	326
Guest rooms	8,118	6,493	172	3,640	5,846	959	2,332	1,662	14,611
Bed spaces	19,718	17,960	380	9,235	15,847	2,726	5,583	3,907	37,678
Employment (persons)	6,768	2,533	152	1,677	2,900	1,123	2,403	1,046	9,301
<i>September quarter 1994—</i>									
Establishments	161	173	10	125	115	11	9	64	334
Guest rooms	8,170	6,563	145	3,465	6,195	901	2,420	1,607	14,733
Bed spaces	20,062	18,278	289	8,871	17,067	2,343	5,986	3,784	38,340
Employment (persons)	7,011	2,717	137	1,727	3,024	1,162	2,513	1,165	9,728
ROOM NIGHTS OCCUPIED ('000)									
<i>September quarter 1993</i>	441.8	340.5	5.0	160.5	338.2	65.1	147.2	66.2	782.2
<i>1994—</i>									
July	150.6	111.1	1.1	48.8	116.3	22.1	53.1	20.4	261.8
August	158.1	112.2	1.1	50.7	115.7	22.7	58.8	21.3	270.4
September	158.8	127.0	1.3	56.8	125.7	22.8	57.7	21.5	285.8
<i>September quarter 1994</i>	467.5	350.4	3.6	156.2	357.6	67.7	169.6	63.2	817.9
ROOM OCCUPANCY RATES (per cent)									
<i>September quarter 1993</i>	59.2	57.0	31.6	47.9	62.9	73.8	68.6	43.4	58.2
<i>1994—</i>									
July	59.7	54.6	24.2	45.6	60.5	79.2	70.8	41.3	57.4
August	62.5	55.2	25.2	47.2	60.3	81.3	78.3	42.8	59.2
September	64.8	64.5	31.0	54.6	67.7	84.5	79.5	44.6	64.7
<i>September quarter 1994</i>	62.3	58.0	26.8	49.1	62.8	81.7	76.2	42.9	60.4
GUEST NIGHTS ('000)									
<i>September quarter 1993</i>	686.8	612.1	7.6	265.2	592.9	105.4	212.5	115.2	1,298.8
<i>1994—</i>									
July	235.2	204.1	1.5	80.4	207.2	33.5	80.4	36.2	439.3
August	236.6	191.2	1.7	80.2	192.2	33.2	84.6	36.0	427.8
September	240.3	221.4	2.1	90.9	212.5	35.0	85.7	35.6	461.7
<i>September quarter 1994</i>	712.2	616.7	5.3	251.5	611.8	101.7	250.7	107.7	1,328.8
BED OCCUPANCY RATES (per cent)									
<i>September quarter 1993</i>	37.9	37.0	21.9	31.2	40.7	42.0	41.4	32.1	37.5
<i>1994—</i>									
July	37.9	36.0	17.2	29.4	39.2	46.2	43.3	31.0	37.0
August	38.1	33.7	19.3	29.2	36.4	45.6	45.6	30.7	36.0
September	40.0	40.4	23.8	34.2	41.6	49.8	47.7	31.3	40.2
<i>September quarter 1994</i>	38.7	36.7	20.1	30.9	39.0	47.2	45.5	31.0	37.7
GUEST ARRIVALS ('000)									
<i>September quarter 1993</i>	313.7	256.1	3.9	132.5	253.3	39.4	99.4	41.1	569.8
<i>1994—</i>									
July	100.0	88.6	1.0	41.4	87.7	10.9	33.6	14.0	188.6
August	105.3	87.5	1.0	42.2	89.0	12.9	33.2	14.5	192.8
September	107.9	103.6	1.3	49.9	97.4	15.0	33.6	14.2	211.5
<i>September quarter 1994</i>	313.2	279.6	3.3	133.5	274.2	38.8	100.4	42.7	592.8
AVERAGE LENGTH OF STAY (days)									
<i>September quarter 1993</i>	2.2	2.4	1.9	2.0	2.3	2.7	2.1	2.8	2.3
<i>September quarter 1994</i>	2.3	2.2	1.6	1.9	2.2	2.6	2.5	2.5	2.2
TAKINGS FROM ACCOMMODATION (\$'000)									
<i>September quarter 1993</i>	35,537	21,826	168	8,000	21,895	6,401	16,696	4,203	57,364
<i>1994—</i>									
July	12,889	7,831	37	2,559	7,976	2,339	6,209	1,600	20,720
August	13,732	7,687	43	2,574	7,833	2,430	6,981	1,556	21,419
September	13,799	8,542	53	2,994	8,482	2,412	6,859	1,541	22,341
<i>September quarter 1994</i>	40,420	24,060	132	8,127	24,292	7,181	20,050	4,697	64,480

(a) For footnote see end of table.

TABLE 5 — HOTELS, MOTELS AND GUEST HOUSES WITH FACILITIES BY STAR GRADING (a) — continued
TASMANIA

Particulars	Licensed hotels with facilities	Motels and guest houses	Star grading			Total
			1, 2 and Ungraded	3	4 and 5	
ESTABLISHMENTS, CAPACITY AND EMPLOYMENT						
<i>September quarter 1993—</i>						
Establishments	92	98	81	79	30	190
Guest rooms	3,410	1,856	1,324	2,485	1,457	5,266
Bed spaces	9,831	5,721	3,811	7,554	4,187	15,552
Employment (persons)	3,370	712	987	1,236	1,859	4,082
<i>September quarter 1994—</i>						
Establishments	91	83	73	79	22	174
Guest rooms	3,513	1,803	1,368	2,499	1,449	5,316
Bed spaces	9,856	5,550	3,856	7,410	4,140	15,406
Employment (persons)	3,474	747	916	1,340	1,965	4,221
ROOM NIGHTS OCCUPIED ('000)						
<i>September quarter 1993</i>	128.0	58.3	35.7	79.0	71.5	186.2
<i>1994—</i>						
July	46.4	20.4	11.8	29.1	25.8	66.8
August	43.8	19.6	11.2	28.0	24.2	63.4
September	55.1	27.2	14.9	37.5	29.8	82.2
<i>September quarter 1994</i>	145.2	67.2	37.9	94.7	79.9	212.5
ROOM OCCUPANCY RATES (per cent)						
<i>September quarter 1993</i>	40.8	34.3	29.4	34.6	53.4	38.5
<i>1994—</i>						
July	42.7	36.6	28.0	37.6	57.6	40.6
August	40.2	35.1	26.3	36.2	54.0	38.5
September	52.2	50.3	36.3	50.1	68.6	51.6
<i>September quarter 1994</i>	45.0	40.6	30.1	41.2	60.0	43.5
GUEST NIGHTS ('000)						
<i>September quarter 1993</i>	209.3	102.3	62.7	136.7	112.2	311.5
<i>1994—</i>						
July	76.3	36.7	20.7	50.4	41.8	113.0
August	69.8	34.3	19.4	47.2	37.6	104.1
September	93.5	51.6	27.8	69.4	47.8	145.0
<i>September quarter 1994</i>	239.6	122.6	67.9	167.0	127.2	362.1
BED OCCUPANCY RATES (per cent)						
<i>September quarter 1993</i>	23.1	19.5	17.9	19.7	29.1	21.8
<i>1994—</i>						
July	25.0	21.4	17.4	22.0	32.7	23.7
August	22.9	19.9	16.2	20.5	29.3	21.8
September	31.6	31.0	24.1	31.2	38.5	31.4
<i>September quarter 1994</i>	26.4	24.0	19.2	24.5	33.4	25.6
GUEST ARRIVALS ('000)						
<i>September quarter 1993</i>	106.7	58.8	36.5	78.2	50.7	165.5
<i>1994—</i>						
July	38.8	20.5	12.0	27.7	19.5	59.3
August	37.3	20.1	11.6	27.3	18.5	57.4
September	49.0	28.7	16.4	39.0	22.3	77.7
<i>September quarter 1994</i>	125.2	69.3	40.1	94.0	60.4	194.5
AVERAGE LENGTH OF STAY (days)						
<i>September quarter 1993</i>	2.0	1.7	1.7	1.7	2.2	1.9
<i>September quarter 1994</i>	1.9	1.8	1.7	1.8	2.1	1.9
TAKINGS FROM ACCOMMODATION (\$'000)						
<i>September quarter 1993</i>	9,500	3,377	1,814	4,424	6,640	12,878
<i>1994—</i>						
July	3,521	1,190	657	1,649	2,406	4,711
August	3,241	1,202	586	1,599	2,259	4,443
September	4,346	1,728	854	2,286	2,935	6,074
<i>September quarter 1994</i>	11,109	4,120	2,096	5,534	7,599	15,229

(a) For footnote see end of table.

TABLE 5 — HOTELS, MOTELS AND GUEST HOUSES WITH FACILITIES BY STAR GRADING (a)—continued
NORTHERN TERRITORY

Particulars	Licensed hotels with facilities	Motels and guest houses	Star grading					Ungraded	Total
			1	2	3	4 and 5			
ESTABLISHMENTS, CAPACITY AND EMPLOYMENT									
<i>September quarter 1993</i>									
Establishments	30	63	14	32	25	5	17	93	
Guest rooms	2,005	3,290	348	1,411	2,101	987	448	5,295	
Bed spaces	5,684	9,563	1,029	3,992	6,280	2,713	1,233	15,247	
Employment (persons)	1,887	1,168	138	700	925	1,071	221	3,055	
<i>September quarter 1994</i>									
Establishments	30	63	15	38	20	5	15	93	
Guest rooms	2,031	3,291	370	1,830	1,822	987	313	5,322	
Bed spaces	5,886	9,582	1,081	5,251	5,494	2,770	872	15,468	
Employment (persons)	2,066	1,177	200	795	918	1,148	182	3,243	
ROOM NIGHTS OCCUPIED ('000)									
<i>September quarter 1993</i>									
	126.6	201.6	20.0	84.2	141.1	60.8	22.2	328.2	
<i>1994—</i>									
July	47.9	76.3	7.8	38.8	47.2	23.9	6.5	124.2	
August	48.2	69.8	6.6	35.7	45.4	24.0	6.2	118.0	
September	41.3	64.0	5.7	31.5	42.8	20.2	5.0	105.3	
<i>September quarter 1994</i>									
	137.4	210.1	20.2	105.9	135.4	68.2	17.8	347.5	
ROOM OCCUPANCY RATES (per cent)									
<i>September quarter 1993</i>									
	68.6	66.6	62.4	64.8	73.0	67.0	53.8	67.4	
<i>1994—</i>									
July	76.1	74.8	68.1	68.3	83.5	78.1	67.2	75.3	
August	76.6	68.4	57.9	62.9	80.5	78.6	63.9	71.5	
September	67.7	64.8	51.4	57.3	78.3	68.4	53.5	65.9	
<i>September quarter 1994</i>									
	73.5	69.4	59.2	62.9	80.8	75.1	61.6	71.0	
GUEST NIGHTS ('000)									
<i>September quarter 1993</i>									
	210.9	366.6	38.9	148.9	255.9	94.8	39.0	577.5	
<i>1994—</i>									
July	81.0	146.7	17.1	74.6	87.5	37.5	11.0	227.7	
August	80.1	126.8	14.9	62.4	81.5	37.1	11.0	207.0	
September	66.1	113.4	10.9	55.2	75.6	29.7	8.0	179.5	
<i>September quarter 1994</i>									
	227.3	386.9	43.0	192.3	244.6	104.3	30.0	614.2	
BED OCCUPANCY RATES (per cent)									
<i>September quarter 1993</i>									
	40.3	41.7	41.1	40.5	44.3	38.0	34.4	41.2	
<i>1994—</i>									
July	44.4	49.4	51.1	45.9	51.4	43.7	40.7	47.5	
August	43.9	42.7	44.5	38.3	47.9	43.2	40.8	43.2	
September	37.4	39.4	33.8	35.1	45.9	35.8	30.4	38.7	
<i>September quarter 1994</i>									
	42.0	43.9	43.2	39.8	48.4	40.9	37.4	43.2	
GUEST ARRIVALS ('000)									
<i>September quarter 1993</i>									
	108.7	168.4	20.1	67.2	115.7	52.4	21.5	277.1	
<i>1994—</i>									
July	40.0	68.9	7.6	37.4	37.8	20.6	5.5	108.9	
August	41.0	62.1	6.8	32.9	36.3	22.1	5.0	103.1	
September	33.3	54.1	5.6	26.4	33.5	17.5	4.4	87.4	
<i>September quarter 1994</i>									
	114.3	185.1	20.0	96.7	107.6	60.2	14.8	299.4	
AVERAGE LENGTH OF STAY (days)									
<i>September quarter 1993</i>									
	1.9	2.2	1.9	2.2	2.2	1.8	1.8	2.1	
<i>September quarter 1994</i>									
	2.0	2.1	2.1	2.0	2.3	1.7	2.0	2.1	
TAKINGS FROM ACCOMMODATION (\$'000)									
<i>September quarter 1993</i>									
	12,842	13,738	950	4,979	11,672	7,379	1,599	26,579	
<i>1994—</i>									
July	5,140	5,458	397	2,656	4,173	3,033	339	10,598	
August	5,168	5,024	376	2,363	4,026	3,085	342	10,192	
September	4,118	4,470	314	2,010	3,715	2,284	265	8,588	
<i>September quarter 1994</i>									
	14,426	14,951	1,087	7,028	11,914	8,402	946	29,377	

(a) For footnote see end of table.

TABLE 5 — HOTELS, MOTELS AND GUEST HOUSES WITH FACILITIES BY STAR GRADING (a)—continued
AUSTRALIAN CAPITAL TERRITORY

Particulars	Licensed hotels with facilities	Motels and guest houses	Star grading			Total
			1, 2 and Ungraded	3	4 and 5	
ESTABLISHMENTS, CAPACITY AND EMPLOYMENT						
<i>September quarter 1993—</i>						
Establishments	13	30	15	21	7	43
Guest rooms	1,666	1,879	771	1,604	1,170	3,545
Bed spaces	4,352	5,989	2,361	4,813	3,167	10,341
Employment (persons)	1,552	607	276	661	1,222	2,159
<i>September quarter 1994—</i>						
Establishments	13	30	14	21	8	43
Guest rooms	1,671	1,852	698	1,590	1,235	3,523
Bed spaces	4,443	5,913	2,174	4,785	3,397	10,356
Employment (persons)	1,599	613	240	672	1,300	2,212
ROOM NIGHTS OCCUPIED ('000)						
<i>September quarter 1993</i>	101.8	98.1	39.5	79.2	81.1	199.8
<i>1994—</i>						
July	35.3	29.8	10.8	24.9	29.3	65.1
August	37.0	32.9	12.3	27.1	30.6	69.9
September	38.5	40.4	15.1	33.2	30.6	78.9
<i>September quarter 1994</i>	110.7	103.2	38.2	85.2	90.5	213.9
ROOM OCCUPANCY RATES (per cent)						
<i>September quarter 1993</i>	66.4	58.4	55.7	55.5	75.3	62.2
<i>1994—</i>						
July	68.1	52.0	50.0	50.6	76.7	59.6
August	71.4	57.4	56.7	54.9	79.8	64.0
September	76.8	72.7	71.9	69.7	82.6	74.6
<i>September quarter 1994</i>	72.0	60.6	59.4	58.3	79.6	66.0
GUEST NIGHTS ('000)						
<i>September quarter 1993</i>	152.5	177.8	73.6	136.7	120.0	330.3
<i>1994</i>						
July	58.0	53.9	19.8	44.5	47.7	111.9
August	55.7	57.1	21.6	45.7	45.6	112.8
September	60.8	77.1	31.0	58.7	48.2	137.9
<i>September quarter 1994</i>	174.6	188.1	72.3	148.9	141.4	362.6
BED OCCUPANCY RATES (per cent)						
<i>September quarter 1993</i>	38.1	33.2	33.9	32.0	41.2	35.3
<i>1994—</i>						
July	42.1	29.4	29.4	30.0	45.3	34.9
August	40.4	31.1	32.0	30.8	43.3	35.1
September	45.6	43.4	47.5	40.9	47.3	44.4
<i>September quarter 1994</i>	42.7	34.6	36.2	33.8	45.2	38.1
GUEST ARRIVALS ('000)						
<i>September quarter 1993</i>	80.3	84.1	33.5	65.0	65.9	164.4
<i>1994—</i>						
July	31.4	24.2	8.2	23.6	23.8	55.6
August	31.3	25.4	10.1	22.5	24.2	56.7
September	32.4	34.8	12.8	30.5	23.9	67.2
<i>September quarter 1994</i>	95.2	84.4	31.2	76.6	71.8	179.5
AVERAGE LENGTH OF STAY (days)						
<i>September quarter 1993</i>	1.9	2.1	2.2	2.1	1.8	2.0
<i>September quarter 1994</i>	1.8	2.2	2.3	1.9	2.0	2.0
TAKINGS FROM ACCOMMODATION (\$'000)						
<i>September quarter 1993</i>	9,943	6,677	2,212	6,159	8,250	16,621
<i>1994—</i>						
July	3,621	2,110	610	1,886	3,235	5,731
August	3,869	2,214	654	2,004	3,425	6,083
September	4,213	2,801	880	2,566	3,569	7,015
<i>September quarter 1994</i>	11,703	7,125	2,144	6,456	10,229	18,829

(a) For footnote see end of table.

TABLE 5 — HOTELS, MOTELS AND GUEST HOUSES WITH FACILITIES BY STAR GRADING (a)—continued
AUSTRALIA

Particulars	Licensed hotels with facilities	Motels and guest houses	Star grading					Ungraded	Total
			1	2	3	4	5		
ESTABLISHMENTS, CAPACITY AND EMPLOYMENT									
<i>September quarter 1993—</i>									
Establishments	1,185	3,739	129	1,772	1,947	301	60	715	4,924
Guest rooms	66,348	100,670	1,991	37,090	65,250	29,870	18,392	14,425	167,018
Bed spaces	174,935	304,200	5,203	108,192	194,825	85,914	44,462	40,539	479,135
Employment (persons)	64,208	37,236	1,284	16,878	28,807	23,103	21,933	9,439	101,444
<i>September quarter 1994—</i>									
Establishments	1,132	3,674	112	1,772	2,011	313	58	540	4,806
Guest rooms	66,524	99,883	1,732	37,528	67,377	30,980	17,454	11,336	166,407
Bed spaces	177,606	301,775	4,519	109,667	201,451	88,941	43,150	31,653	479,381
Employment (persons)	66,323	37,697	1,218	17,407	30,772	24,822	21,580	8,221	104,020
ROOM NIGHTS OCCUPIED ('000)									
<i>September quarter 1993</i>	3,422.0	4,938.5	72.1	1,592.7	3,335.6	1,745.9	1,026.8	587.3	8,360.5
<i>1994—</i>									
July	1,243.9	1,665.7	20.6	540.0	1,171.7	667.2	350.2	159.9	2,909.6
August	1,291.3	1,637.5	19.8	531.9	1,153.1	672.1	380.3	171.5	2,928.7
September	1,314.3	1,772.1	19.2	578.3	1,249.1	684.1	386.3	169.5	3,086.4
<i>September quarter 1994</i>	3,849.5	5,075.3	59.6	1,650.1	3,573.9	2,023.4	1,116.8	500.9	8,924.8
ROOM OCCUPANCY RATES (per cent)									
<i>September quarter 1993</i>	56.1	53.4	39.4	46.7	55.7	63.6	60.7	44.3	54.5
<i>1994—</i>									
July	60.5	53.8	38.4	46.5	56.1	69.5	64.7	46.4	56.5
August	62.7	52.9	36.8	45.8	55.2	70.0	70.3	48.9	56.8
September	65.9	59.2	37.0	51.5	61.8	73.6	73.8	49.9	61.9
<i>September quarter 1994</i>	63.0	55.3	37.4	47.9	57.7	71.0	69.5	48.4	58.4
GUEST NIGHTS ('000)									
<i>September quarter 1993</i>	5,695.1	9,036.9	125.4	2,907.0	6,008.4	2,950.1	1,657.7	1,083.5	14,732.0
<i>1994—</i>									
July	2,133.3	3,110.6	38.3	1,015.8	2,165.2	1,152.8	568.8	303.1	5,243.9
August	2,145.1	2,895.6	35.4	958.0	2,012.2	1,116.1	600.8	318.2	5,040.7
September	2,226.8	3,299.6	33.1	1,084.3	2,291.8	1,173.1	624.8	319.4	5,526.4
<i>September quarter 1994</i>	6,505.2	9,305.9	106.8	3,058.0	6,469.1	3,442.0	1,794.3	940.7	15,811.0
BED OCCUPANCY RATES (per cent)									
<i>September quarter 1993</i>	35.4	32.3	26.2	29.2	33.6	37.3	40.5	29.1	33.5
<i>1994—</i>									
July	38.9	33.3	27.3	29.9	34.7	41.8	42.5	31.4	35.3
August	39.0	31.0	25.3	28.2	32.2	40.5	44.9	32.5	33.9
September	41.8	36.5	24.4	33.0	37.9	44.0	48.3	33.7	38.4
<i>September quarter 1994</i>	39.9	33.5	25.7	30.4	34.9	42.1	45.2	32.5	35.9
GUEST ARRIVALS ('000)									
<i>September quarter 1993</i>	2,447.5	4,858.1	67.4	1,667.7	3,166.5	1,256.0	672.6	475.5	7,305.6
<i>1994—</i>									
July	916.5	1,691.7	19.5	584.9	1,141.9	505.6	230.0	126.3	2,608.3
August	927.0	1,557.0	18.3	542.2	1,057.4	494.8	241.5	129.8	2,484.0
September	958.8	1,793.9	18.2	614.0	1,218.2	523.4	245.5	133.3	2,752.7
<i>September quarter 1994</i>	2,802.3	5,042.6	56.1	1,741.1	3,417.5	1,523.8	717.0	389.4	7,844.9
AVERAGE LENGTH OF STAY (days)									
<i>September quarter 1993</i>	2.3	1.9	1.9	1.7	1.9	2.3	2.5	2.3	2.0
<i>September quarter 1994</i>	2.3	1.8	1.9	1.8	1.9	2.3	2.5	2.4	2.0
TAKINGS FROM ACCOMMODATION (\$'000)									
<i>September quarter 1993</i>	344,815	327,348	3,003	79,834	227,553	174,216	140,590	46,967	672,163
<i>1994—</i>									
July	130,694	115,048	983	29,209	83,303	69,945	49,555	12,748	245,742
August	136,351	113,183	942	28,733	81,663	69,932	54,127	14,136	249,534
September	142,083	122,536	971	31,098	89,435	73,252	56,274	13,589	264,619
<i>September quarter 1994</i>	409,128	350,767	2,895	89,040	254,401	213,128	159,957	40,474	759,895

(a) From December quarter 1993, establishments with fewer than 5 rooms have been excluded from the scope of this collection. See Explanatory Note 2 (page 20).

TABLE 6—HOLIDAY FLATS, UNITS AND HOUSES BY STATE/TERRITORY, AUSTRALIA

Particulars	New South Wales	Victoria	Queensland	South Australia	Western Australia	Tasmania	Northern Territory	Australian Capital Territory	Australia
LETTING ENTITIES, CAPACITY AND EMPLOYMENT									
September quarter 1993— Letting entities	412	184	594	87	106	45	10	15	1,453
Flats, units and houses									
Single bedroom	1,940	985	3,405	366	527	225	149	136	7,733
Multiple bedroom	8,385	2,002	12,809	996	1,570	501	105	358	26,726
Total flats, units and houses	10,325	2,987	16,214	1,362	2,097	726	254	494	34,459
Bed spaces	47,895	13,160	65,054	6,747	9,874	3,189	983	1,819	148,721
Employment (persons) (a)	1,087	625	2,031	260	440	283	54	88	4,868
September quarter 1994— Letting entities	408	197	632	88	106	53	10	16	1,510
Flats, units and houses									
Single bedroom	1,930	1,016	3,560	321	573	264	166	142	7,972
Multiple bedroom	8,493	2,103	13,865	1,005	1,682	540	152	444	28,284
Total flats, units and houses	10,423	3,119	17,425	1,326	2,255	804	318	586	36,256
Bed spaces	48,518	13,391	70,544	6,742	10,712	3,533	1,224	2,248	156,912
Employment (persons) (a)	1,075	732	2,325	240	502	305	70	114	5,363
UNIT NIGHTS OCCUPIED ('000)									
September quarter 1993	362.4	108.7	1,062.7	43.7	96.8	28.1	18.5	29.9	1,750.8
1994—									
July	132.2	44.3	383.2	14.2	40.2	9.2	9.2	13.3	645.8
August	117.9	38.3	386.2	11.4	34.8	8.7	8.4	13.3	619.0
September	132.2	44.7	368.5	15.9	39.1	13.4	6.7	14.2	634.7
September quarter 1994	382.3	127.2	1,138.0	41.5	114.0	31.3	24.3	40.8	1,899.5
UNIT OCCUPANCY RATES (per cent)									
September quarter 1993	38.2	39.6	71.3	35.2	50.2	42.0	79.3	65.8	55.3
1994—									
July	41.0	45.8	71.2	34.5	57.5	36.7	93.4	74.1	57.6
August	36.7	39.7	71.8	27.7	49.7	35.2	85.3	73.9	55.3
September	42.3	47.7	70.6	40.1	57.8	55.9	70.5	80.8	58.4
September quarter 1994	40.0	44.4	71.2	34.0	55.0	42.5	83.2	76.2	57.1
UNIT LETTINGS ('000)									
September quarter 1993	62.1	27.4	149.7	9.5	22.6	12.3	5.3	4.3	293.2
1994									
July	22.8	10.9	54.4	3.3	8.7	4.1	2.3	1.8	108.2
August	20.6	8.7	52.1	2.4	7.8	4.0	2.1	1.8	99.6
September	25.7	10.6	56.7	3.5	9.7	6.4	1.9	2.4	116.9
September quarter 1994	69.0	30.2	163.2	9.2	26.2	14.5	6.3	6.1	324.8
AVERAGE LENGTH OF STAY (days)									
September quarter 1993	5.8	4.0	7.1	4.6	4.3	2.3	3.5	7.0	6.0
1994—									
July	5.8	4.1	7.0	4.4	4.6	2.2	4.0	7.3	6.0
August	5.7	4.4	7.4	4.7	4.5	2.2	4.0	7.2	6.2
September	5.2	4.2	6.5	4.5	4.0	2.1	3.6	5.9	5.4
September quarter 1994	5.5	4.2	7.0	4.5	4.4	2.2	3.9	6.7	5.8
TAKINGS FROM ACCOMMODATION (\$'000)									
September quarter 1993	20,227	8,648	57,485	2,551	5,153	1,694	1,469	2,352	99,577
1994—									
July	6,932	3,798	21,410	784	2,386	583	801	1,011	37,705
August	6,601	3,532	21,897	661	2,066	550	787	998	37,094
September	8,021	3,908	23,327	972	2,456	911	508	1,139	41,243
September quarter 1994	21,554	11,238	66,634	2,418	6,908	2,044	2,097	3,149	116,042

(a) Employment numbers exclude real estate agents and their employees.

TABLE 7 — CARAVAN PARKS BY TYPE AND BY STATE/TERRITORY, AUSTRALIA

Particulars	New South Wales			Victoria			Queensland		
	Short-term	Long-term	Total	Short-term	Long-term	Total	Short-term	Long-term	Total
ESTABLISHMENTS, CAPACITY AND EMPLOYMENT									
<i>September quarter 1993—</i>									
Establishments	471	326	797	436	157	593	226	400	626
Capacity									
On-site vans	3,249	3,557	6,806	2,084	1,924	4,008	1,094	4,736	5,830
Other powered sites	42,864	20,654	63,518	36,064	8,735	44,799	10,623	21,991	32,614
Unpowered sites	15,883	4,818	20,701	13,104	2,044	15,148	8,304	5,546	13,850
Cabins, flats, etc.	2,849	1,810	4,659	2,170	881	3,051	1,204	2,267	3,471
<i>Total capacity</i>	<i>64,845</i>	<i>30,839</i>	<i>95,684</i>	<i>53,422</i>	<i>13,584</i>	<i>67,006</i>	<i>21,225</i>	<i>34,540</i>	<i>55,765</i>
Sites occupied by long-term guests	3,548	12,128	15,676	1,814	4,591	6,405	1,789	15,348	17,137
Other sites permanently reserved	21,766	984	22,750	13,847	390	14,237	691	552	1,243
Employment (persons)	1,788	1,189	2,977	1,321	491	1,812	794	1,392	2,186
<i>September quarter 1994—</i>									
Establishments	486	312	798	438	164	602	239	393	632
Capacity									
On-site vans	3,355	3,461	6,816	2,063	1,858	3,921	1,053	4,745	5,798
Other powered sites	43,210	20,034	63,244	36,395	8,567	44,962	10,738	21,436	32,174
Unpowered sites	15,454	4,615	20,069	13,066	2,299	15,365	7,895	5,040	12,935
Cabins, flats, etc.	3,064	1,902	4,966	2,307	1,138	3,445	1,303	2,359	3,662
<i>Total capacity</i>	<i>65,083</i>	<i>30,012</i>	<i>95,095</i>	<i>53,831</i>	<i>13,862</i>	<i>67,693</i>	<i>20,989</i>	<i>33,580</i>	<i>54,569</i>
Sites occupied by long-term guests	3,685	12,018	15,703	1,708	4,749	6,457	1,812	14,886	16,698
Other sites permanently reserved	21,985	1,143	23,128	14,447	357	14,804	850	513	1,363
Employment (persons)	1,901	1,163	3,064	1,325	510	1,835	896	1,373	2,269
SITE NIGHTS OCCUPIED ('000)									
<i>September quarter 1993</i>	<i>2,913.0</i>	<i>1,437.5</i>	<i>4,350.4</i>	<i>1,665.5</i>	<i>538.5</i>	<i>2,204.0</i>	<i>870.0</i>	<i>1,870.4</i>	<i>2,740.4</i>
<i>1994—</i>									
July	995.9	475.7	1,471.6	566.3	184.3	750.6	313.2	614.8	928.0
August	981.9	472.8	1,454.8	565.3	183.6	748.9	305.8	613.7	919.5
September	1,006.6	474.8	1,481.3	587.3	183.5	770.8	259.8	578.8	838.6
<i>September quarter 1994</i>	<i>2,984.4</i>	<i>1,423.3</i>	<i>4,407.7</i>	<i>1,718.9</i>	<i>551.4</i>	<i>2,270.3</i>	<i>878.8</i>	<i>1,807.3</i>	<i>2,686.1</i>
SITE OCCUPANCY RATES (per cent)									
<i>September quarter 1993</i>	<i>48.8</i>	<i>50.7</i>	<i>49.4</i>	<i>34.0</i>	<i>43.1</i>	<i>35.8</i>	<i>44.6</i>	<i>58.9</i>	<i>53.5</i>
<i>1994—</i>									
July	49.4	51.1	49.9	34.3	42.9	36.0	48.1	59.1	54.9
August	48.7	50.8	49.3	34.1	42.7	35.9	47.1	59.0	54.4
September	51.6	52.7	51.9	36.5	44.1	38.0	41.4	57.5	51.3
<i>September quarter 1994</i>	<i>49.8</i>	<i>51.5</i>	<i>50.4</i>	<i>34.9</i>	<i>43.2</i>	<i>36.6</i>	<i>45.6</i>	<i>58.5</i>	<i>53.5</i>
TAKINGS FROM ACCOMMODATION (\$'000)									
<i>September quarter 1993</i>	<i>21,210</i>	<i>15,377</i>	<i>36,586</i>	<i>9,914</i>	<i>5,387</i>	<i>15,301</i>	<i>10,295</i>	<i>18,219</i>	<i>28,515</i>
<i>1994—</i>									
July	7,355	5,069	12,424	3,899	1,876	5,775	3,942	6,260	10,202
August	6,990	4,989	11,979	2,851	1,826	4,677	3,677	6,198	9,875
September	8,380	5,360	13,740	3,852	1,933	5,786	3,393	5,935	9,327
<i>September quarter 1994</i>	<i>22,725</i>	<i>15,418</i>	<i>38,143</i>	<i>10,602</i>	<i>5,635</i>	<i>16,238</i>	<i>11,012</i>	<i>18,393</i>	<i>29,404</i>

TABLE 7—CARAVAN PARKS BY TYPE AND BY STATE/TERRITORY, AUSTRALIA—continued

Particulars	South Australia			Western Australia			Tasmania		
	Short-term	Long-term	Total	Short-term	Long-term	Total	Short-term	Long-term	Total
ESTABLISHMENTS, CAPACITY AND EMPLOYMENT									
<i>September quarter 1993—</i>									
Establishments	168	43	211	197	117	314	54	13	67
Capacity									
On-site vans	934	252	1,186	1,144	1,070	2,214	255	136	391
Other powered sites	12,021	2,795	14,816	11,468	7,567	19,035	2,678	607	3,285
Unpowered sites	5,810	1,071	6,881	3,988	1,945	5,933	2,021	286	2,307
Cabins, flats, etc.	1,227	390	1,617	820	532	1,352	257	126	383
<i>Total capacity</i>	<i>19,992</i>	<i>4,508</i>	<i>24,500</i>	<i>17,420</i>	<i>11,114</i>	<i>28,534</i>	<i>5,211</i>	<i>1,155</i>	<i>6,366</i>
Sites occupied by long-term guests	605	1,399	2,004	1,228	3,777	5,005	168	217	385
Other sites permanently reserved	1,437	30	1,467	1,914	277	2,191	881	17	898
Employment (persons)	584	145	729	665	396	1,061	155	43	198
<i>September quarter 1994—</i>									
Establishments	171	43	214	205	107	312	63	12	75
Capacity									
On-site vans	884	272	1,156	1,126	1,143	2,269	269	116	385
Other powered sites	12,031	2,716	14,747	12,206	7,238	19,444	3,085	500	3,585
Unpowered sites	5,746	886	6,632	4,243	1,963	6,206	2,276	236	2,512
Cabins, flats, etc.	1,327	378	1,705	870	564	1,434	347	95	442
<i>Total capacity</i>	<i>19,988</i>	<i>4,252</i>	<i>24,240</i>	<i>18,445</i>	<i>10,908</i>	<i>29,353</i>	<i>5,977</i>	<i>947</i>	<i>6,924</i>
Sites occupied by long-term guests	642	1,406	2,048	1,275	3,798	5,073	260	184	444
Other sites permanently reserved	1,499	13	1,512	2,068	183	2,251	979	21	1,000
Employment (persons)	573	144	717	731	395	1,126	195	37	232
SITE NIGHTS OCCUPIED ('000)									
<i>September quarter 1993</i>	<i>352.2</i>	<i>152.8</i>	<i>504.9</i>	<i>638.1</i>	<i>502.3</i>	<i>1,140.4</i>	<i>120.5</i>	<i>28.4</i>	<i>148.9</i>
<i>1994—</i>									
July	125.7	50.8	176.5	236.5	169.8	406.3	45.4	7.7	53.1
August	119.0	49.8	168.7	234.7	172.6	407.3	45.8	8.3	54.0
September	139.4	50.7	190.1	202.4	165.9	368.3	49.0	8.0	57.0
<i>September quarter 1994</i>	<i>384.1</i>	<i>151.3</i>	<i>535.4</i>	<i>673.6</i>	<i>508.3</i>	<i>1,181.8</i>	<i>140.2</i>	<i>24.0</i>	<i>164.2</i>
SITE OCCUPANCY RATES (per cent)									
<i>September quarter 1993</i>	<i>19.1</i>	<i>36.8</i>	<i>22.4</i>	<i>40.0</i>	<i>49.1</i>	<i>43.5</i>	<i>25.1</i>	<i>26.8</i>	<i>25.4</i>
<i>1994—</i>									
July	20.3	38.6	23.5	41.4	50.2	44.6	24.5	26.3	24.8
August	19.2	37.8	22.5	41.0	51.0	44.8	24.7	28.1	25.2
September	23.2	39.7	26.1	36.6	50.7	41.8	27.3	28.2	27.5
<i>September quarter 1994</i>	<i>20.9</i>	<i>38.7</i>	<i>24.0</i>	<i>39.7</i>	<i>50.6</i>	<i>43.8</i>	<i>25.5</i>	<i>27.5</i>	<i>25.8</i>
TAKINGS FROM ACCOMMODATION (\$'000)									
<i>September quarter 1993</i>	<i>3,916</i>	<i>1,415</i>	<i>5,331</i>	<i>7,100</i>	<i>5,725</i>	<i>12,825</i>	<i>646</i>	<i>350</i>	<i>996</i>
<i>1994—</i>									
July	1,362	463	1,826	2,888	2,047	4,936	226	67	294
August	1,189	442	1,631	2,566	2,125	4,691	232	71	303
September	1,660	511	2,171	2,229	2,084	4,313	361	78	439
<i>September quarter 1994</i>	<i>4,211</i>	<i>1,416</i>	<i>5,628</i>	<i>7,684</i>	<i>6,256</i>	<i>13,940</i>	<i>819</i>	<i>217</i>	<i>1,036</i>

TABLE 7 — CARAVAN PARKS BY TYPE AND BY STATE/TERRITORY, AUSTRALIA—continued

Particulars	Northern Territory		Australian Capital Territory		Australia		
	Short-term	Long-term	Total	Total	Short-term	Long-term	Total
ESTABLISHMENTS, CAPACITY AND EMPLOYMENT							
<i>September quarter 1993—</i>							
Establishments	57	25	82	5	1,609	1,086	2,695
Capacity							
On-site vans	68	245	313	150	8,828	12,070	20,898
Other powered sites	2,594	1,851	4,445	495	118,312	64,695	183,007
Unpowered sites	3,200	759	3,959	419	52,310	16,888	69,198
Cabins, flats, etc.	142	78	220	10	8,669	6,094	14,763
<i>Total capacity</i>	<i>6,004</i>	<i>2,933</i>	<i>8,937</i>	<i>1,074</i>	<i>188,119</i>	<i>99,747</i>	<i>287,866</i>
Sites occupied by long-term guests	213	911	1,124	316	9,365	38,687	48,052
Other sites permanently reserved	3	5	8	..	40,539	2,255	42,794
Employment (persons)	256	94	350	27	5,563	3,777	9,340
<i>September quarter 1994—</i>							
Establishments	63	20	83	5	1,665	1,056	2,721
Capacity							
On-site vans	112	209	321	147	8,862	11,951	20,813
Other powered sites	2,989	1,557	4,546	495	120,654	62,543	183,197
Unpowered sites	3,452	622	4,074	419	52,132	16,080	68,212
Cabins, flats, etc.	183	74	257	10	9,401	6,520	15,921
<i>Total capacity</i>	<i>6,736</i>	<i>2,462</i>	<i>9,198</i>	<i>1,071</i>	<i>191,049</i>	<i>97,094</i>	<i>288,143</i>
Sites occupied by long-term guests	302	829	1,131	304	9,684	38,174	47,858
Other sites permanently reserved	1	4	5	..	41,829	2,234	44,063
Employment (persons)	269	69	338	44	5,890	3,735	9,625
SITE NIGHTS OCCUPIED ('000)							
<i>September quarter 1993</i>	<i>182.6</i>	<i>131.4</i>	<i>314.0</i>	<i>39.2</i>	<i>6,741.8</i>	<i>4,700.6</i>	<i>11,442.4</i>
<i>1994—</i>							
July	104.7	43.8	148.5	14.2	2,387.7	1,561.2	3,948.9
August	81.1	38.8	119.9	12.4	2,333.5	1,551.9	3,885.5
September	64.9	32.9	97.8	14.1	2,309.4	1,508.6	3,818.0
<i>September quarter 1994</i>	<i>250.7</i>	<i>115.5</i>	<i>366.2</i>	<i>40.8</i>	<i>7,030.6</i>	<i>4,621.8</i>	<i>11,652.4</i>
SITE OCCUPANCY RATES (per cent)							
September quarter 1993	33.2	48.7	38.3	39.7	39.0	51.2	43.2
<i>1994—</i>							
July	50.1	57.4	52.1	42.9	40.4	51.9	44.3
August	38.8	50.9	42.1	37.5	39.5	51.6	43.6
September	32.2	44.5	35.5	43.8	40.3	51.8	44.2
September quarter 1994	40.5	51.0	43.3	41.4	40.1	51.7	44.0
TAKINGS FROM ACCOMMODATION (\$'000)							
<i>September quarter 1993</i>	<i>2,725</i>	<i>1,414</i>	<i>4,140</i>	<i>680</i>	<i>55,807</i>	<i>48,567</i>	<i>104,374</i>
<i>1994—</i>							
July	1,458	486	1,944	235	21,131	16,504	37,635
August	1,143	408	1,551	216	18,648	16,276	34,924
September	896	344	1,240	262	20,772	16,507	37,279
<i>September quarter 1994</i>	<i>3,498</i>	<i>1,238</i>	<i>4,735</i>	<i>713</i>	<i>60,551</i>	<i>49,286</i>	<i>109,837</i>

TABLE 8 — VISITOR HOSTELS BY STATE/TERRITORY, AUSTRALIA

Particulars	New South Wales (a)	Victoria	Queensland	South Australia	Western Australia	Tasmania	Northern Territory	Australia
ESTABLISHMENTS, CAPACITY AND EMPLOYMENT								
<i>September quarter 1993—</i>								
Establishments	74	43	121	42	52	38	40	410
Bed spaces	4,825	2,531	8,000	2,029	2,841	1,430	3,025	24,681
Employment (persons)	275	140	552	121	146	77	176	1,487
<i>September quarter 1994—</i>								
Establishments	81	52	116	41	56	41	35	422
Bed spaces	5,346	2,927	7,791	2,022	3,042	1,712	2,794	25,634
Employment (persons)	299	157	554	127	157	95	149	1,538
GUEST NIGHTS ('000)								
<i>September quarter 1993</i>	205.4	67.7	400.1	48.0	96.5	8.3	169.0	994.9
<i>1994—</i>								
July	79.6	26.5	135.4	16.6	35.8	3.2	57.5	354.5
August	77.5	23.7	127.6	13.9	32.4	3.1	53.8	332.1
September	85.6	32.2	117.6	17.9	34.2	6.1	45.8	339.4
<i>September quarter 1994</i>	242.7	82.4	380.5	48.5	102.4	12.4	157.1	1,026.0
BED OCCUPANCY RATES (per cent)								
<i>September quarter 1993</i>	46.3	29.1	54.4	25.9	36.9	6.5	60.7	43.9
<i>1994</i>								
July	48.0	29.2	56.0	26.7	37.9	6.0	66.4	44.6
August	46.8	27.0	52.8	22.3	34.3	6.0	62.1	42.0
September	53.4	36.7	50.3	29.6	37.5	11.9	56.4	44.3
<i>September quarter 1994</i>	49.4	30.9	53.1	26.1	36.6	8.0	61.8	43.6
GUEST ARRIVALS ('000)								
<i>September quarter 1993</i>	60.1	26.9	156.1	28.3	28.5	5.5	71.2	376.5
<i>1994—</i>								
July	21.4	10.8	50.6	10.6	12.3	2.2	23.9	131.8
August	21.2	9.9	45.7	7.8	10.6	1.9	23.1	120.2
September	25.7	13.3	42.3	10.2	12.3	3.5	20.3	127.7
<i>September quarter 1994</i>	68.3	34.1	138.6	28.6	35.3	7.5	67.4	379.8
AVERAGE LENGTH OF STAY (days)								
<i>September quarter 1993</i>	3.4	2.5	2.6	1.7	3.4	1.5	2.4	2.6
<i>1994—</i>								
July	3.7	2.4	2.7	1.6	2.9	1.5	2.4	2.7
August	3.7	2.4	2.8	1.8	3.0	1.7	2.3	2.8
September	3.3	2.4	2.8	1.8	2.8	1.7	2.3	2.7
<i>September quarter 1994</i>	3.6	2.4	2.7	1.7	2.9	1.6	2.3	2.7
TAKINGS FROM ACCOMMODATION (\$'000)								
<i>September quarter 1993</i>	2,514	914	4,542	432	1,038	87	1,983	11,511
<i>1994—</i>								
July	980	355	1,593	141	391	40	719	4,219
August	1,003	324	1,547	127	365	37	666	4,070
September	1,122	413	1,413	161	380	68	579	4,137
<i>September quarter 1994</i>	3,106	1,092	4,554	428	1,136	145	1,964	12,425

(a) Including Australian Capital Territory establishments.

EXPLANATORY NOTES

- INTRODUCTION** **1** This publication contains data, for Australia and each State and Territory, from a quarterly survey of tourist accommodation establishments. The period covered by the latest survey is the 3 months ended 30 September 1994.
- SCOPE** **2** Tourist accommodation establishments currently included in the survey comprise two groups:
- Establishments which provide predominantly short-term accommodation (i.e. for periods of less than 2 months) to the general public. These include:
 - Hotels, motels and guest houses, with facilities* being hotels licensed to operate a public bar and motels, private hotels and guest houses all of which provide a bath (or shower) and toilet in most guest rooms and have breakfast available for guests.
 - NOTE:** From December quarter 1993, hotel, motel and guest house establishments with fewer than five rooms have been formally excluded from the scope of this statistical collection. This change in scope resulted in the exclusion of 95 establishments which in the September quarter 1993 Survey aggregates for Australia represented 1.9 per cent of hotel, motel and guest house establishments but accounted for only 0.2 per cent of accommodation capacity and less than 0.1 per cent of occupancy and takings.
 - Holiday flats, units and houses* (excluding establishments predominantly operated on a time share basis) which are operated by owners or managers who have sole letting rights to at least five flats, units or houses or by real estate agents for short-term letting. They are mainly self-contained in terms of cooking, bath (or shower) and toilet facilities and do not have breakfast available for guests. Data for holiday flats, units and houses include short-term owner occupation as well as paying guest occupation.
 - Visitor hostels* which provide accommodation to visitors on a bed basis (rather than by the room). This category does not include establishments providing charity type accommodation (e.g. Salvation Army hostels) nor hotels, motels and guest houses without in-room facilities which provide accommodation on a per room basis.
 - *Caravan parks* which provide either predominantly short-term (i.e. for periods of less than 2 months) or predominantly long-term (i.e. for periods of 2 months or more) accommodation to the general public and which provide powered sites for caravans and toilet, shower and laundry facilities for guests.
- 3** Data collected and published for each type of establishment (other than holiday flats, units and houses) include both long-term and short-term guests at these establishments.
- 4** Establishments which provide more than one type of accommodation (e.g. a motel with attached caravan park) are treated as two or more separate establishments. However, self-contained units, flats, cabins, etc. attached to hotels, motels or to caravan parks are included in the capacity for those establishments and not treated as separate holiday flat, unit or house establishments.
- DEFINITIONS** **5** *Number of establishments.* For hotels, motels and guest houses, caravan parks and visitor hostels, the number of establishments within the scope of the survey which operated for any part of the survey period, or which closed temporarily for the quarter for seasonal reasons.
- 6** *Number of letting entities.* For holiday flats, units and houses, the number of owners, managers or real estate agents within the scope of the survey who operated for any part of the survey period.
- 7** Capacity in terms of *Guest rooms, Bed spaces, Holiday units* or *Caravan park sites, etc.* is the maximum number available to accommodate paying guests during the survey period. Capacity closed temporarily for seasonal reasons is included.
- 8** *Bed spaces.* Three-quarter beds are counted as one bed space; double beds as two bed spaces. Cots are excluded.

EXPLANATORY NOTES—continued

DEFINITIONS—continued

9 *Total caravan park capacity* comprises *On-site vans, Other powered sites, Unpowered sites and Cabins, etc.*

10 *Room nights available.* The number of guest rooms available multiplied by the number of days for which they were available during the survey period. Includes operating periods only for establishments closing (other than for seasonal reasons) or opening during the survey period.

11 Occupancy in terms of *Room nights, Unit nights or Site nights occupied* refers to the total number of nights each guest room, holiday unit or caravan park site, etc. was occupied during the survey period.

NOTE: From September quarter 1992, caravan park sites, etc. permanently reserved for 2 months or more at the end of the survey period but only casually occupied by their tenants have been recorded continuously as *Site nights occupied* irrespective of whether the tenants of individual sites were in residence on any particular night. (See also paragraph 14 below). Previously, usage of these sites was recorded as *Site nights occupied* only when their tenants were in the park. Total site occupancy rates from September quarter 1992 are therefore not comparable with those from previous quarters.

12 Occupancy in terms of *Guest nights* refers to the total number of nights each paying guest stayed during the survey period.

13 *Sites occupied by long-term guests.* The total number of sites, etc. occupied at the end of the survey period by guests who have stayed continuously for 2 months or more.

14 *Other sites permanently reserved.* The total number of powered and unpowered sites, on-site vans and cabins, etc. continuously let for 2 months or more by the end of the survey period to tenants who occupy the sites only on a casual or sporadic basis. Separate data for this item are available only from September quarter 1992.

15 *Occupancy rates* represent occupancy expressed as a percentage of total capacity available during the survey period – e.g.

$$\text{Room occupancy rate (\%)} \text{ for the period} = \frac{\text{Room nights occupied}}{(\text{Guest rooms}) \times (\text{No. of days in the period})} \times 100$$

providing that, for establishments closing (other than for seasonal reasons) or opening during the survey period, the denominator of the above expression includes only operating periods.

16 *Guest arrivals.* The total number of paying guests counted only on the first night they stayed at the accommodation establishment.

17 *Unit lettings.* The total number of times a holiday flat, unit or house was occupied by a new tenant, counted only on the first night it was occupied by the new tenant.

18 *Average length of stay* is expressed in number of days and calculated:

- for hotels, motels and guest houses and for visitor hostels, by dividing *Guest nights* by *Guest arrivals* and
- for holiday flats, units and houses, by dividing *Unit nights occupied* by *Unit lettings*.

19 *Takings from accommodation.* Revenue received from the provision of accommodation. Takings from meals are excluded. Takings from accommodation for each month generally represent the takings received during that month. Where payments are received in advance of, or after, the provision of accommodation to guests, the monthly figure for takings from accommodation may not necessarily bear a direct relationship to the number of guests accommodated during the month. Rental and storage fees paid to caravan parks for the keeping of private vans in parks are included in the takings of the month they are received.

EXPLANATORY NOTES --continued

- DEFINITIONS** ---continued
- 20** *Star grading.* The grading of hotels and motels with facilities based on the classification system used by members of the Australian Automobile Association (AAA). The gradings are allocated according to a points system based on the amenities and facilities available to guests. Details of the grading scheme are contained in the RACV-RAASA members' publication *Accommodation Australia*, or the individual tour guides produced by members of the AAA. For the purpose of classifying establishments to a star grading in this publication, 'half' star gradings are ignored (e.g. a two and a half star grading has been shown as two star).
- 21** *Employment.* The number of persons working at accommodation establishments at the end of the survey period (including working proprietors and those working on other than accommodation activities).
- UNPUBLISHED STATISTICS**
- 22** The ABS may make available on request certain unpublished tourist accommodation statistics. A charge may be made for this information.
- RELATED PUBLICATIONS**
- 23** Publications for Australia, and each State and Territory, are released by the respective offices of the ABS. Tourist accommodation statistics for past quarters are available on request. Other ABS publications which may be of interest include:
- Directory of Tourism Statistics, 1991* (1130.0) (irregular)
- Overseas Arrivals and Departures, Australia* (3401.0) (monthly)
- Tourism Indicators Australia* (8634.0) (quarterly)
- Selected Accommodation Establishments, Australia, 1984-85* (8636.0) (irregular)
- Tourist Accommodation Atlas of Queensland, 1991* (8645.3) (irregular)
- 24** Current publications produced by the ABS are listed in the *Catalogue of Publications and Products*. (1101.0). The ABS also issues the *Publications Advice* (1105.0) on Tuesdays and Fridays which lists publications to be released in the next few days. Both the *Catalogue* and *Publications Advice* are available from any ABS office.
- SYMBOLS AND OTHER USAGES**
- n.a. not available
n.p. not available for publication but included in totals where applicable
r figure or series revised since previous issue
.. not applicable
— nil or rounded to zero
- 25** Where figures have been rounded, discrepancies may occur between totals and the sums of the component items.
- ELECTRONIC SERVICES**
- DISCOVERY.** The ABS intends discontinuing its statistical information service on DISCOVERY. Please contact Peter Davidson (Phone 06 252 6684) to discuss possible alternatives for acquiring statistics or if you wish to comment on this proposal.
- PC-AUSSTATS.** Thousands of up-to-date time series are available on this ABS on-line service. For further information, phone the PC-AUSSTATS Help Desk on (06) 252 6017.
- TELESTATS.** This service provides:
- foreign trade statistics tailored to users' requirements. Further information is available on (06) 252 5404
 - text and tables for selected Main Economic Indicator publications. Further information is available on (06) 252 5405.
- FLOPPY DISK SERVICE** Selected ABS statistics are available on floppy disk. Further information is available on (06) 252 6684.

RICHARD MADDEN
Acting Australian Statistician



For more information ...

The ABS publishes a wide range of statistics and other information on Australia's economic and social conditions. Details of what is available in various publications and other products can be found in the *ABS Catalogue of Publications and Products* available at all ABS Offices (see below for contact details).

Information Consultancy Service

Information tailored to special needs of clients can be obtained from the Information Consultancy Service available at ABS Offices (see Information Inquiries below for contact details).

National *Dial-a-Statistic* Line

0055 86 400

(Steadycom P/L premium rate 25c/21 4 secs.)

This number gives 24-hour access, 365 days a year for a range of statistics.

Electronic Data Services

A large range of data is available via on-line services, diskette, magnetic tape, tape cartridge and CD ROM. For more details about our electronic data services, contact any ABS Office (see below).

Bookshops and Subscriptions

There are over 400 titles of various publications available from ABS bookshops in all ABS Offices (see below Bookshop Sales for contact details). The ABS also provides a subscription service through which nominated publications are provided by mail on a regular basis at no additional cost (telephone Publications Subscription Service toll free on 008 02 0608 Australia wide).

Sales and Inquiries

Regional Offices	Information Inquiries	Bookshop Sales
SYDNEY (02)	268 4611	268 4620
MELBOURNE (03)	615 7000	615 7829
BRISBANE (07)	222 6351	222 6350
PERTH (09)	360 5140	360 5307
ADELAIDE (08)	237 7100	237 7582
HOBART (002)	20 5800	20 5800
CANBERRA (06)	207 0326	207 0326
DARWIN (089)	43 2111	43 2111
National Office		
ACT (06)	252 6007	008 020 608

ABS Email Addresses

Keylink	STAT.INFO/ABS
X.400	(C:AU,A:TELMEMO,O:ABS,SN:INFO,FN:STAT)
Internet	STAT.INFO@ABS. TELEMEMO.AU



Information Services, ABS, PO Box 10, Belconnen ACT 2616

